



Invisivent[®] *EVO* HR

The most discrete, self-regulating and sound absorbing overframe ventilator for high rise applications

Invisivent®^{EVO} HR

Introduction

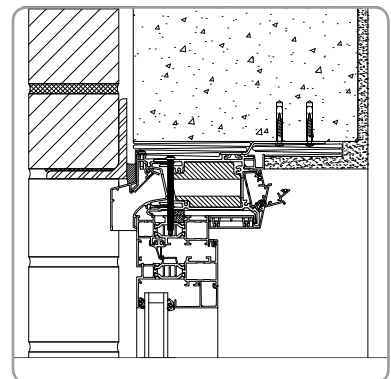
The new Invisivent®^{EVO} HR provides the ideal solution for wind-impacted applications such as high-rise buildings (up to 45 m) and apartment buildings on the coast.

The Invisivent®^{EVO} HR contains acoustic material, that muffles external noises as much as possible (e.g. wind, seagulls, traffic), which increases user comfort. The presence of various types of sound-damping foam in the inside profile provides 2 possible levels of sound insulation (Basic or High). In addition to that, the rain cap, which is mounted as standard, ensures perfect water-resistance in even the most extreme conditions. Extra mounting screws and clips guarantee satisfactory stability and sturdiness of the entire window.

The unique Invisivent®^{EVO} HR combines its functionality with maximum respect for the architecture since it can be positioned on the window frame, behind the wall.

Product

- Ideal for wind-impacted applications (coast & high-rise building situations)
- Increased comfort due to integrated acoustic insulation
- Rain cap guarantees perfect waterproofing
- Extra mounting screws guarantee good stability
- Extra clips in the inside profile ensure perfect closure of the inside flap
- Easy maintenance: removable inside profile and acoustic foam
- Can be used on all types and depths of window (aluminium, wood, PVC)
- Manual, cord, rod and motor operation possible
- Installation above the window frame behind wall so that the surface area of the glass is not reduced



Technical characteristics		
	Invisivent® ^{EVO} HR Basic	Invisivent® ^{EVO} HR High
Ventilation figures		
Q at 1 Pa	10,6 dm³/s/m	26,5 m³/h/m
Q at 2 Pa	57,2 m³/h/m	41,7 m³/h/m
Q at 2 Pa	15,9 l/s/m	11,6 l/s/m
Water-tightness in closed position	up to 1200 Pa	up to 1200 Pa
Water-tightness in open position	up to 250 Pa	up to 250 Pa
Thermally broken	yes	yes
U-value	2,0 W/m²K	2,2 W/m²K
f-value	0,80	0,81
Control	16 positions	16 positions
Self-regulating	yes	yes
Equivalent area	13489 mm²/m	9349 mm²/m
Airflow in closed position at 50Pa <15%	yes	yes
Insect mesh	yes	yes
Comfort		
Sound reduction $D_{n,e,w}$ (C;C _v) in open position	34 (0;-1) dB	39 (0;-1) dB
Sound reduction $D_{n,e,w}$ (C;C _v) in closed position	57 (-1;-4) dB	62 (-2;-6) dB
Size		
Glass reduction	0 mm	0 mm
Height	65 mm	65 mm
Window depths	50 up to 184 mm	50 up to 184 mm



RENSON® reserves the right to make technical changes to the products shown. The latest brochures may be downloaded from www.renson.eu

RENSON® Export Department • Tel. +32 (0)56 62 71 04 • export@renson.net
 N.V. RENSON® Ventilation S.A • IZ 2 Vijverdam • Maalbeekstraat 10 • B-8790 Waregem • Belgium
 Tel. +32 (0)56 62 71 11 • Fax +32 (0)56 60 28 51 • export@renson.net • www.renson.eu

